

◆ Features

- * Built in 2 LEDs flash circuit to drive 2 LEDs with alternate flashing as follow sound output
- * 4 independence sounds to be playing from 4 trigger keys (K1 , K2 , K3 , K4 pin)
- * LH pin : trigger mode option by one shot with re-trigger (LH pin open) type or level hold (LH pin connect to VDD) type
- * 1 sequence trigger key (SQ pin) for 4 sounds output when SQ pin is sequence triggered

<u>PIN</u>	<u>SOUND LIST</u>	<u>TIMES</u>
K1	Fire Engine	2
K2	Ambulance	16
K3	Police Car	16
K4	Machine Gun	2
SQ	Sound Sequence Output from sounds of K1 , K2 , K3 , K4 pin	

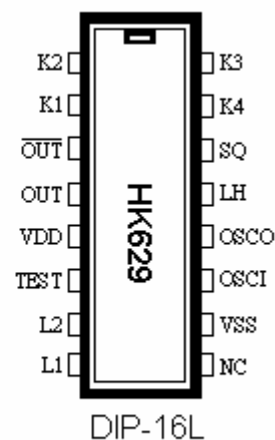
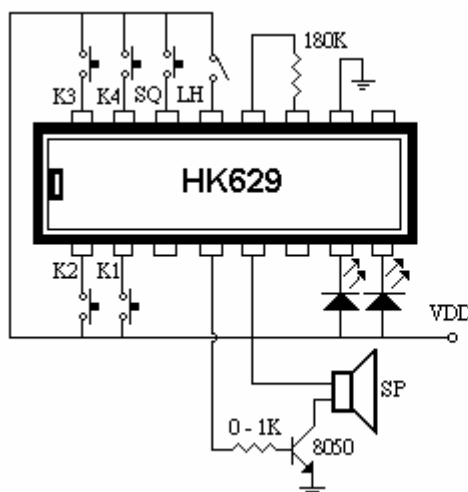
◆ Application

≡ Security system , Car Alarm ,TV game ,Toys

◆ Electrical Characteristics

<i>Characteristics</i>	<i>Sym.</i>	<i>Min.</i>	<i>Typ.</i>	<i>Max.</i>	<i>Unit</i>	<i>Remark</i>
Operating voltage	V _{DD}	1.8	3	4.8	V	
Operating current	I _{OP}	----	0.1	0.5	mA	No Load
Stand by current	I _{SB}	----	1	5	uA	
Oscillator frequency	F _{OSC}	----	128	----	KHz	±30% R _{osc} = 180KΩ
Operating temperature	T _{EMP}	0	25	60	°C	
Driving current	I _O	1	----	----	mA	@ V _{DS} =1V

◆ Application circuit



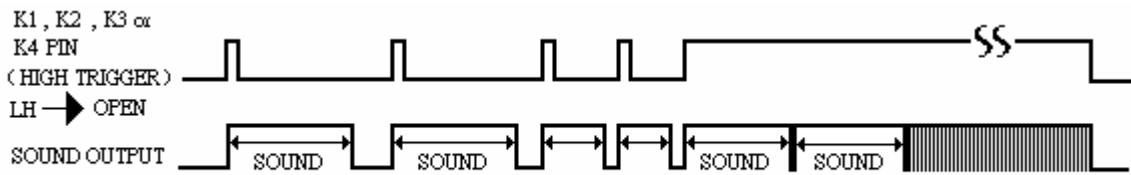
★ Package Type : DIP-16L

★ Trigger Mode and Timing Chart :

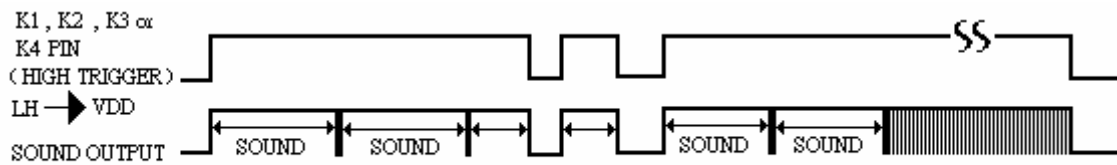
HK629

SOUND EFFECT IC

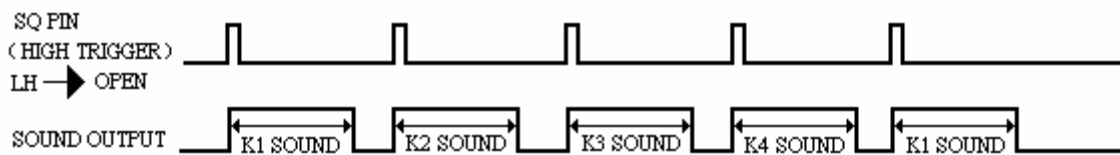
3 SIRENS & 1 MACHINE GUN SOUND



TRIGGER MODE : ONE SHOT RE-TRIGGER



TRIGGER MODE : LEVEL HOLD



TRIGGER MODE : ONE SHOT RE-TRIGGER