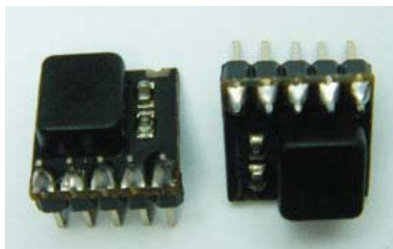


# BAROMETER MODULE

2006-12-18

PRELIMINARY

Version: 1.1



- . Integrated pressure sensor
- . Pressure Range 900-1100hpa
- . 16 Bit  $\Sigma$ - $\Delta$  ADC
- . I<sup>2</sup>C Serial Interface
- . One system clock line (32768Hz)
- . Low voltage, low power

## Description

The HP01D includes a piezo-resistive pressure sensor and an ADC interface. It provides 16 bit word data for pressure and temperature related voltage. HP01D is a low power, low voltage device with automatic power down switching. I<sup>2</sup>C Serial Interface is used for communications with a microprocessor. Sensor packaging options are DIP or SMD (with metal cap)

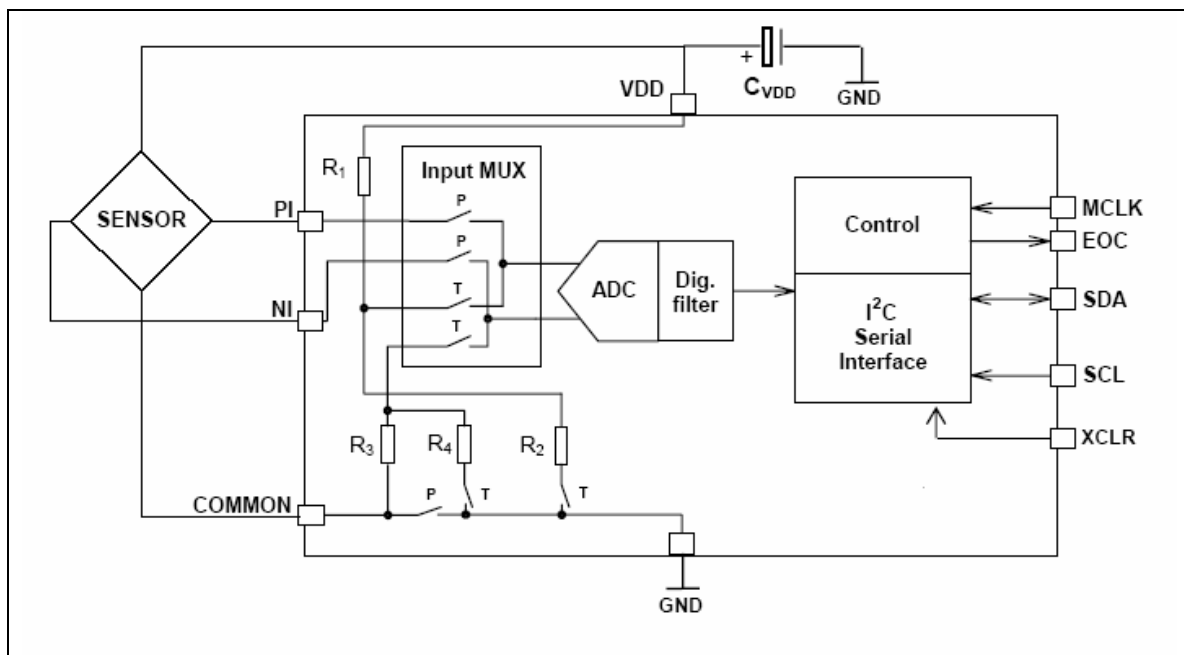
## Features

- . 15 Bit ENOB ADC resolution
- . Supply voltage 2.0v-5.0v
- . 0°C to + 55°C operating range

## Applications

- . Pressure measurement and control systems
- . Weather forecast products

## Block Diagram



**BAROMETER MODULE**

2006-12-18

PRELIMINARY

Version: 1.1

Pin Name	Pin Number	Type	Function
VSS	1	G	power ground
VDD	2	P	power VCC
MCLK	3	I	master clock(32k) input
XCLR	4	I	ADC reset input (not available on HP01D)*
SDA	5	I/O	I <sup>2</sup> C data input and output
SCL	6	I	I <sup>2</sup> C clock input

\* XCLR is to reset the AD converter (active low). During the AD conversion phase, XCLR should stay high. After AD conversion end, keep XCLR pin low before another AD conversion starts. For HP01D this pin is not available - pull high internally.

**Absolute Maximum Ratings**

Parameter	Symbol	Min	Max	Unit
Supply Voltage	VDD	-0.3	5.0	V
Over pressure	P		5	Bar(abs)
Storage Temperature	Tstg	-30	90	°C

**Recommended Operating Conditions**

Parameter	Symbol	Conditions	Min	Typ	Max	Unit
Supply Voltage	VDD		2.0	3	5.0	V
Supply Current	I	VDD=3V				V
During conversion				500		μA
Stand by				1		μA
Operating Pressure Range	P		900		1100	Hpa (abs)
Operating Temperature Range	T		0	25	55	°C
Conversion Time	T	MCLK=32k			35	ms
Duty Cycle of MCLK			40%	50%	60%	%
Serial Date Rate	SCL				100	KHZ

**Pressure and Temperature Output Characteristics**

HP01D system is able to reach the following characteristics:

Parameter	Symbol	Conditions	Min	Typ	Max	Unit
Resolution			0.1			hpa
Accuracy		900-1100	-1.5		1.5	hpa
Pressure Sensitivity	SNS	900-1100	25	27	30	Cnts/mbar
Maximum Error Over Temperature		0~+55	-3.0		3.0	hpa
Long Term Stability		12 month		1		hpa
VDD Dependency		2.0~5.0	-1.5	0	1.5	hpa
Temperature coefficient of sensitivity	TCS		-0.45	-0.55	-0.6	ΔD1/ΔD2

**BAROMETER MODULE**

2006-12-18

PRELIMINARY

Version: 1.1

**Pressure and Temperature Measurement**

The main function of HP01D system is to convert the uncompensated pressure and temperature signal from a pressure sensor. After the conversion, the following two values can be obtained:

- . measured temperature      "D2"
- . measured pressure         "D1"

As the sensor is strongly temperature dependent, it is necessary to compensate for these effects. Therefore necessary temperature compensation is needed to achieve nominal accuracy.

**Pressure and Temperature Compensation Calculation:**

Step 1: (set relative pressure starting reference point, normally this step be done after power up or reset relative pressure)

$$P0=1013.2\text{hp}$$

$$D1(P0)=D1$$

$$D2(P0)=D2$$

Step 2: (normal pressure calculation with first order temperature compensation)

$$dUT=D2-D2(P0) \quad ; \text{ calculate current temperature difference with reference temperature}$$

$$dTCS=TCS*dUT \quad ; \text{ calculate compensated pressure offset with temperature coefficients}$$

$$dUP=D1+dTCS-D1(P0) \quad ; \text{ calculate temperature compensated pressure reading}$$

$$P2=dUP/SNS \quad ; \text{ calculate pressure difference referred to starting pressure } P0$$

$$P=P0+P2 \quad ; \text{ calculate current relative pressure}$$

**Example:**

$$D1(P0)=30000 \quad (\text{obtained after power up reading: } D1)$$

$$D2(P0)=4100 \quad (\text{obtained after power up reading: } D2)$$

$$TCS=-0.55 \quad (\text{nominal module value from this data sheet})$$

$$SNS=27 \quad (\text{nominal module value from this data sheet})$$

$$D1=30036 \quad (\text{current pressure AD reading from module})$$

$$D2=4107 \quad (\text{current temperature AD reading from module})$$

$$dUT = 4107-4100 = 7$$

$$dTCS=-0.55*7=-3.85$$

$$dUP=30036-3.85-30000=32$$

$$P2=32/27=1.18$$

$$P=1013.2+1.18=1014.4$$

# BAROMETER MODULE

2006-12-18

PRELIMINARY

Version: 1.1

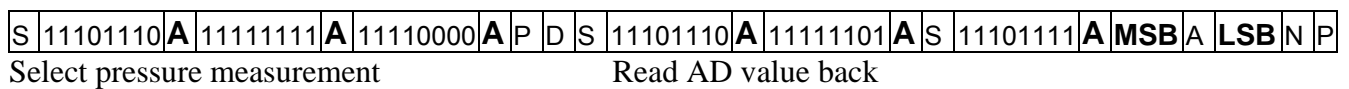
## Serial Interface

The I2C interface is used for reading measurement result from AD conversion:D1 and D2.

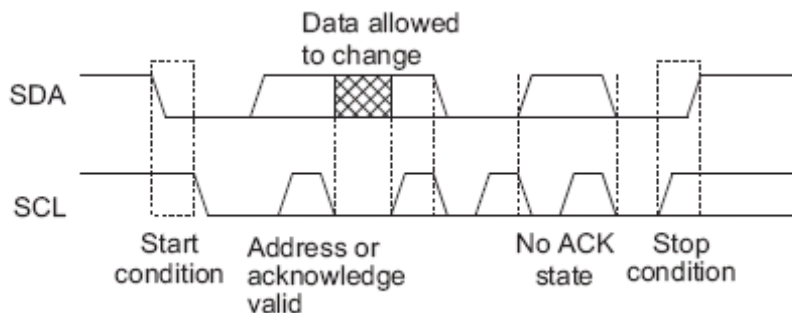
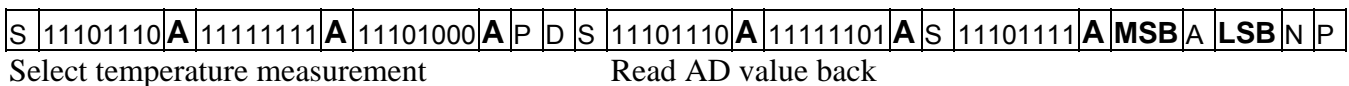
## Reading Temperature and Pressure value:D1,D2

AD chip I2C address is set to 0xEE (device write address), 0xEF (device read address). In order to get the AD value D1 and D2, you have to follow the following timing sequence:

Pressure Measure:



Temperature Measure:



S: I2C bus START (refer to AT24C02 EEPROM start command)

P: I2C bus STOP (refer to AT24C02 EEPROM stop command)

**A** (bold): I2C bus acknowledge by slave (SDA pull low: slave send out bit 0)

A: I2C bus acknowledge by master (SDA pull low: master send out bit 0)

N: I2C bus no acknowledge from master (SDA keep high: master send out bit 1 instead)

D : delay for 38ms or above

MSB: conversion result (MSB bit clocked out first)

LSB: conversion result (MSB bit clocked out first).

### Remark:

Before start an AD conversion cycle, remember to set XCLR pin high so that the system is no longer in the reset state (not valid for HP01D).

All data read from the module is in hex format.

After first power on, the first read data should be disregarded, and only the second value be used. This can assure that unstable reading after power on reset can be filtered out.

# BAROMETER MODULE

2006-12-18

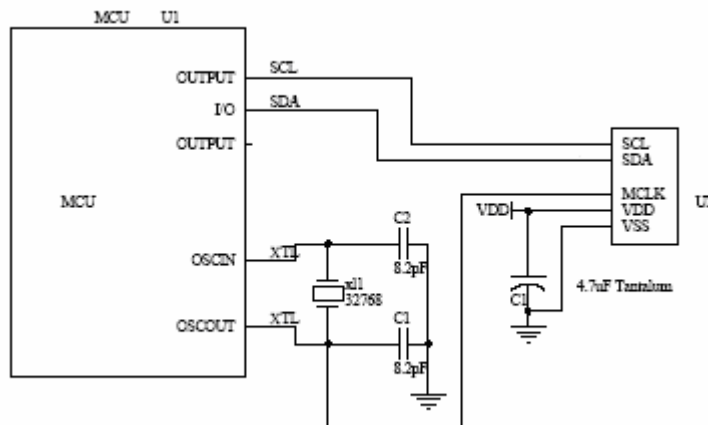
PRELIMINARY

Version: 1.1

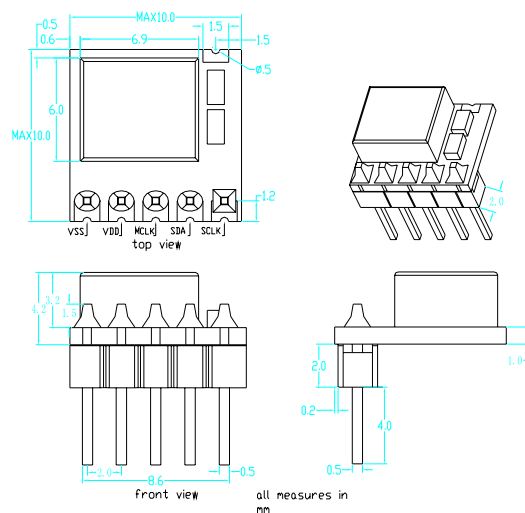
Like any other semiconductor device, the sensor is sensitive to light. During the application of this sensor, please keep the sensor in dark place to achieve best accuracy.

Since the module is not calibrated for sensitivity and temperature, thus only relative pressure can be calculated. If you need higher accuracy with temperature, please refer to our HP02 or HP03 series pressure module accordingly.

## Typical Application Circuit Diagram:



## HP01D Mechanical Dimension



**BAROMETER MODULE**

2006-12-18

PRELIMINARY

Version: 1.1

**Important Notices**

Do not use this product as safety or emergency stop device or in any application where failure of this product could lead in personal injury. Failure to comply with these instructions could result with death or serious injury.

Should buyer purchase or use HOPE RF products for any such unintended or unauthorized application, buyer should indemnify and hold HOPE RF and its officers, employees, affiliates and distributors harmless against all claims, costs, damages and expenses, and reasonable attorney fees arising out of, directly or indirectly, any claim of personal injury associated with such unintended or unauthorized use, even if such claim alleges that HOPE RF was negligent regarding the design or manufacturing of the part.

Hope RF reserves the right, without further notice, to change the product specification and/or information in this document and to improve reliability, functions and design.

**HOPE MICROELECTRONICS CO.,LTD**

Rm B.8/F LiJingGe Emperor Regency 6012

ShenNan Rd., Shenzhen,China

Tel: 86-755-82973805

Fax: 86-755-82973550

Email: [sales@hoperf.com](mailto:sales@hoperf.com)[trade@hoperf.com](mailto:trade@hoperf.com)Website: <http://www.hoperf.com><http://www.hoperf.cn><http://hoperf.en.alibaba.com>

This document may contain preliminary information and is subject to change by Hope Microelectronics without notice. Hope Microelectronics assumes no responsibility or liability for any use of the information contained herein. Nothing in this document shall operate as an express or implied license or indemnity under the intellectual property rights of Hope Microelectronics or third parties. The products described in this document are not intended for use in implantation or other direct life support applications where malfunction may result in the direct physical harm or injury to persons. NO WARRANTIES OF ANY KIND, INCLUDING, BUT NOT LIMITED TO, THE IMPLIED WARRANTIES OF MERCHANTABILITY OR FITNESS FOR A PARTICULAR PURPOSE, ARE OFFERED IN THIS DOCUMENT.

©2006, HOPE MICROELECTRONICS CO.,LTD. All rights reserved.